



**barkman**<sup>™</sup>  
creating concrete solutions



**barkman**  
Creating Concrete Solutions



# Harvest Grove Outdoor Kitchen Bar with Fridge Instruction Manual

**Materials Included:**

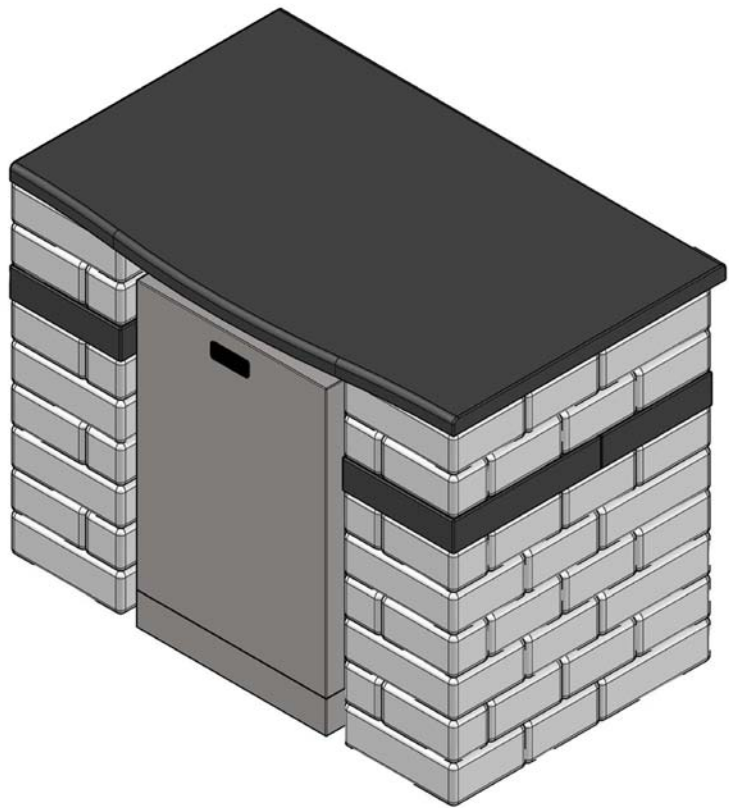
- 12" standard quarry stone - 48 pieces
- 4" standard quarry stone - 44 pieces
- 4" x 4" x 4" quarry stone - 8 pieces
- 3-piece ebony accent band
- 1-piece ebony countertop
- outdoor-rated fridge
- Sunstone manual for fridge
- plastic shims
- 1 tube of landscape glue
- gloves
- instruction guide
- installation video
- landscape design plan

**Note:**

If installing your bar with fridge on an unstructured base, please ensure to follow these steps:

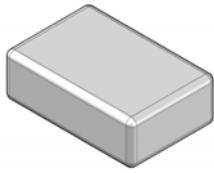
- Excavate area approx. 9" below grade
- Excavate approx. 6" larger than your actual kit dimensions to ensure a stable base.
- Fill with ¾" down limestone and compact firmly
- Level out ½" of sand and install kit as per the instruction guide.
- If you are installing on a solid base such as an existing patio and/or base prep is not necessary, then you can proceed to the first step.

These instructions may not refer to all base conditions. Base prep will greatly depend on existing ground conditions and may require alternate techniques.

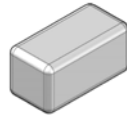


Scan our QR code to watch our online instruction videos or go to [youtube.com/barkmanconcrete](https://youtube.com/barkmanconcrete)

For any issues on Sunstone steel components or warranty claims, please call Texas BBQ Wholesalers at 888-934-9449 or email them at [service@sunstonemetalproducts.com](mailto:service@sunstonemetalproducts.com).



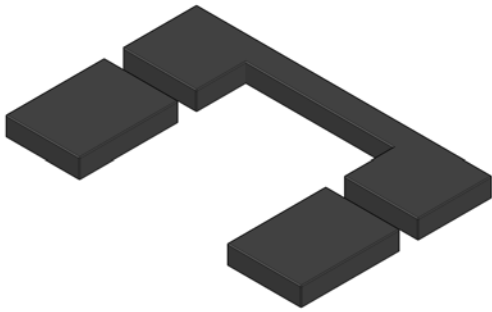
12" standard quarry stone



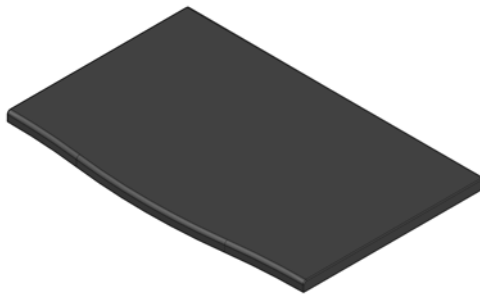
4" standard quarry stone



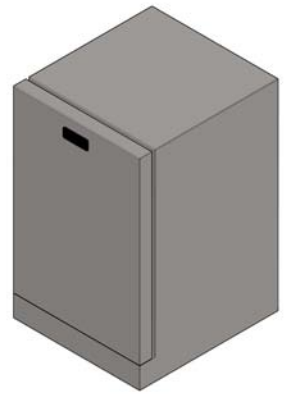
4" x 4" x 4" quarry stone



3-piece ebony accent band



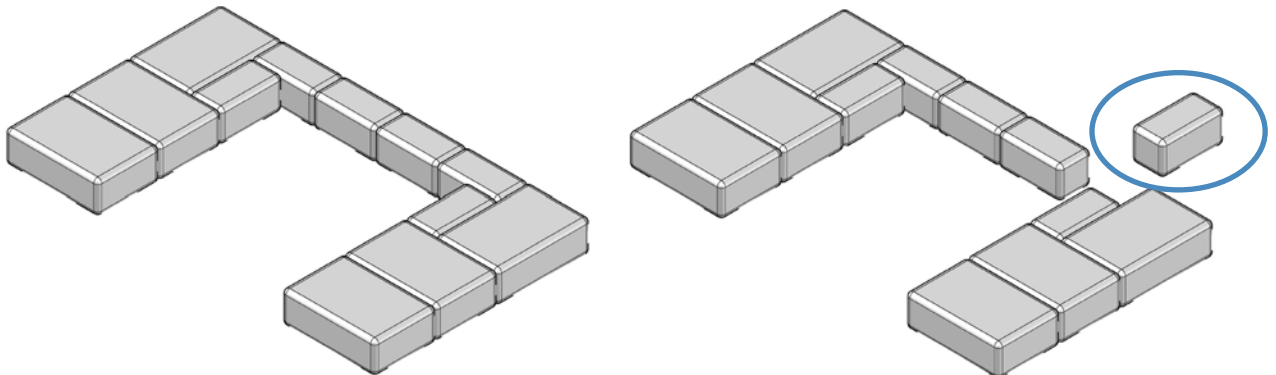
1-piece ebony countertop



outdoor-rated fridge

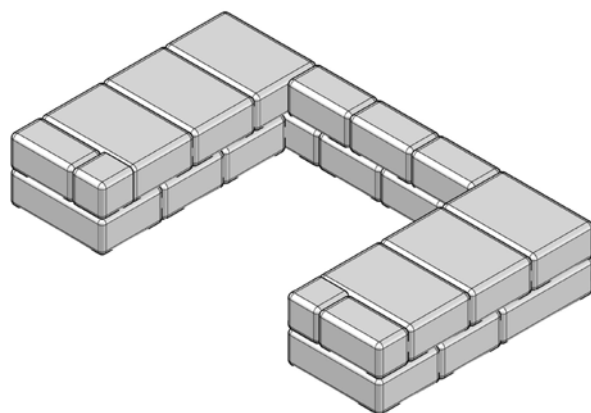
**Note: Certain steps indicate using landscape glue. This is for added stability but it's optional and at the discretion of the user.**

STEP 1



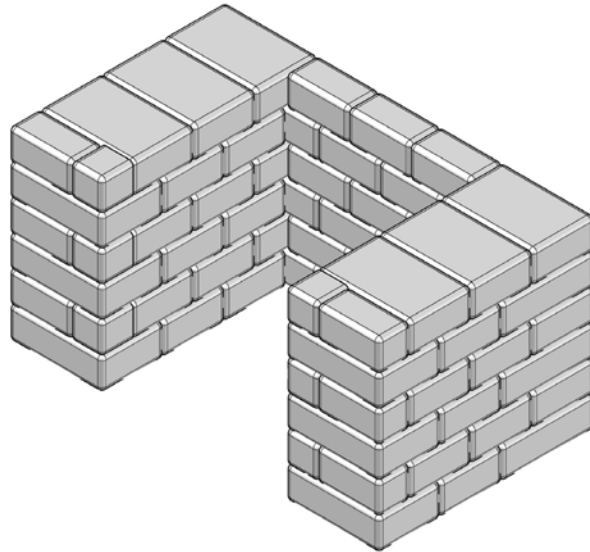
Lay down the stone pattern shown using 12" and 4" standard pieces. **Leave out the highlighted block if running electrical above grade. Check that stones are level at every step. Use included shims for adjustments.**

STEP 2



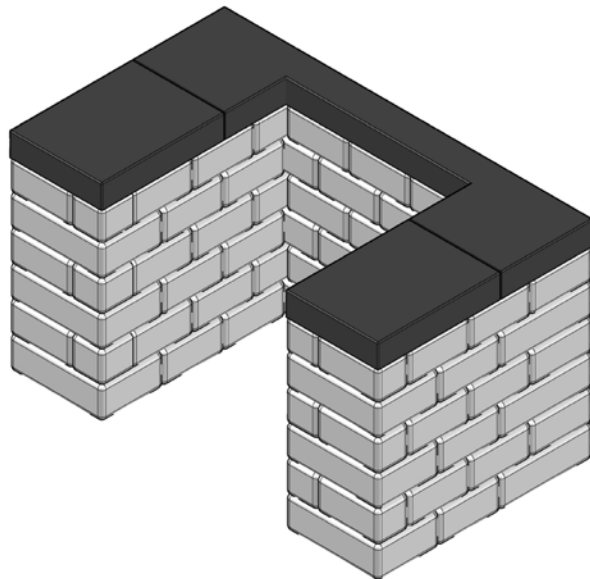
Lay down the stone pattern shown using 12", 4" standard and 4"x4"x4" pieces. Glue this layer down to the 1<sup>st</sup> layer.

## STEP 3



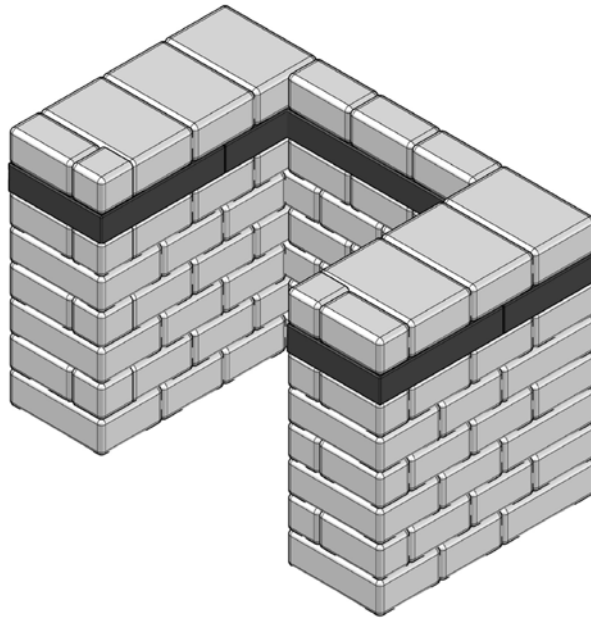
Repeat the patterns from Steps 1 & 2 until a total of 6 layers high.

## STEP 4



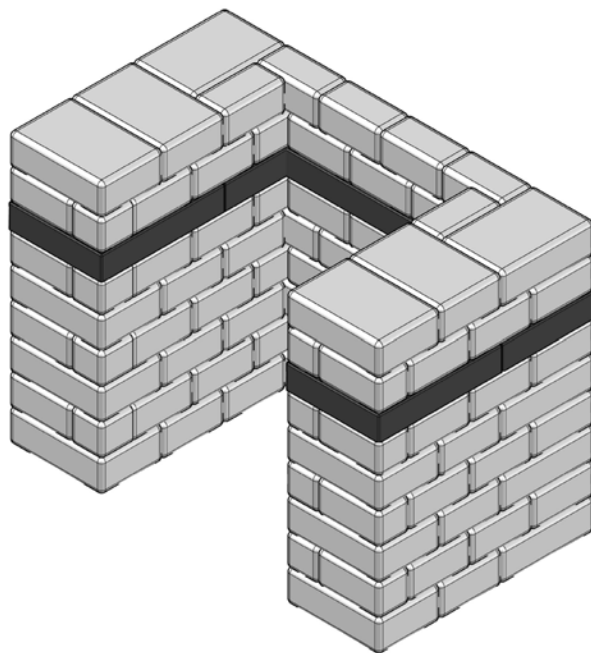
Lay down the *3-piece accent band* as shown. Make sure all 3 pieces are level. Glue this down to the *quarry stone* below.

STEP 5



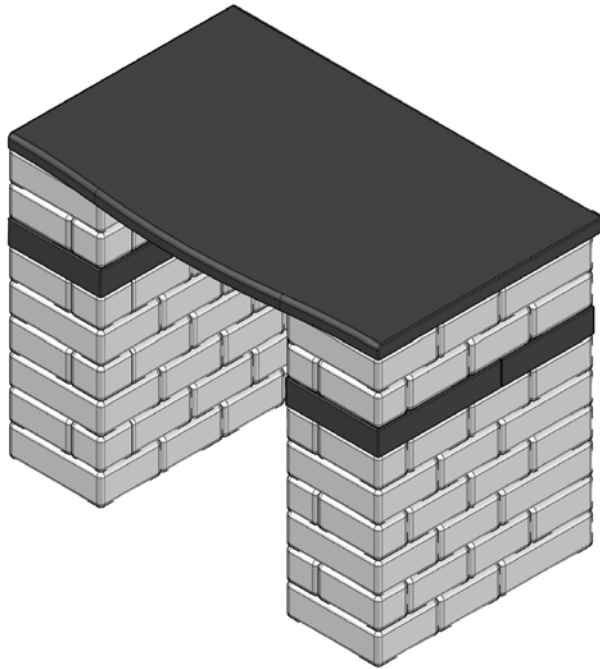
Repeat the pattern from Step 2.

STEP 6



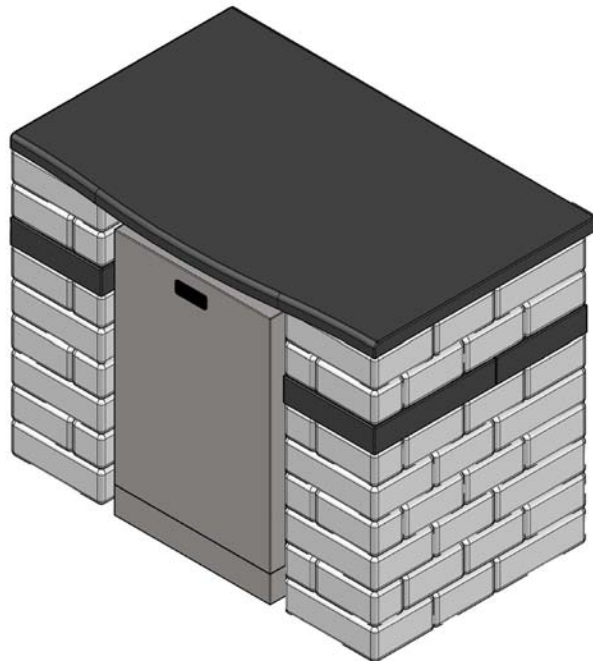
Repeat the pattern from Step 1.

## STEP 7



Lay down the *1-piece ebony countertop* as shown, and make sure it is level. Glue this down to the *quarry stone* below.

## STEP 8



Insert the *outdoor-rated fridge* into the space provided.

**Refer to the manual included with the outdoor-rated fridge for proper use.**

## Harvest Grove Outdoor Kitchen Kits

### BARKMAN CONCRETE LIMITED

Steinbach Office  
152 Brandt Street, Steinbach, MB R5G 0R2  
T 204 326 3445 or 1 800 461 2278  
F 204 326 5915  
steinbach@barkmanconcrete.com

Winnipeg Office  
909 Gateway Road, Winnipeg, MB R2K 3L1  
T 204 667 3310 or 1 800 342 2879  
F 204 663 4854  
winnipeg@barkmanconcrete.com

Calgary Office  
813 McCool Street, Box 1136,  
Crossfield, AB T0M 0S0  
T 403 946 4630 F 403 946 4631  
calgary@barkmanconcrete.com

Vancouver Office  
2104-290 Newport Drive,  
Port Moody, BC V3H 5N2  
T 778 689 7670 or 1 800 461 2278  
F 604 949 0321  
vancouver@barkmanconcrete.com

### DISTRIBUTION CENTERS

barkman Saskatoon  
3550 Idylwyld Drive North, Saskatoon, SK  
T 1 306 549 7544

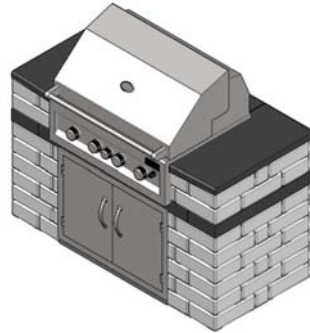
barkman Kelowna  
1904 Old Okanagan Highway, Westbank, BC  
T 1 204 346 9490

barkman Surrey  
8167 132nd Street, Surrey, BC  
T 1 204 346 9490

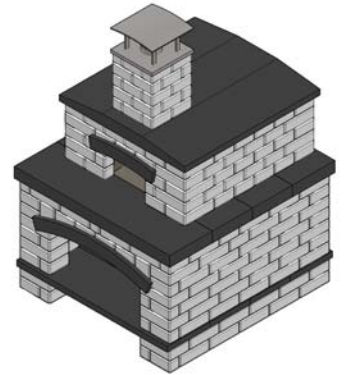
Follow Barkman Concrete  
on facebook, twitter  
@barkmanconcrete and  
visit our YouTube channel.



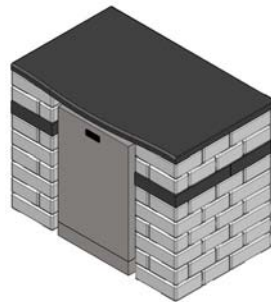
Made in Canada.



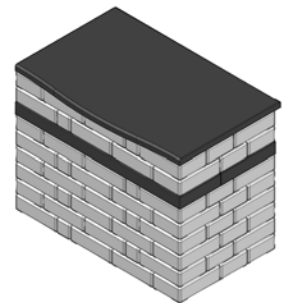
BBQ Grill



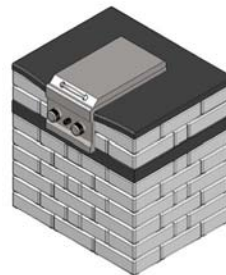
Pizza Oven



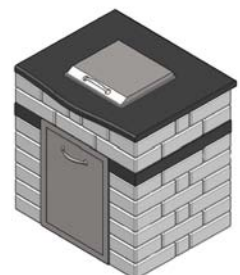
Bar with Fridge



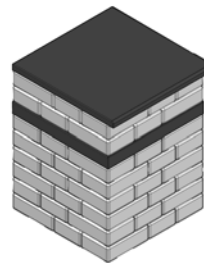
Bar Counter



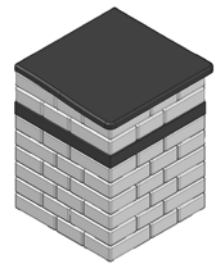
Side Burner



Prep Station with Waste Receptacle



Corner Unit



End Units (Left and Right)

**barkman**<sup>TM</sup>  
creating concrete solutions

www.barkmanconcrete.com